

Anti-GAPDH Mouse Monoclonal Antibody

Cat. No.	Package
FI01101S	100 μ L
FI01101M	500 μ L (5*100 μ l)

PROPERTIES

Host Species	Mouse
Conjugate	Unconjugated
Purified By	Affinity chromatography (Protein G purification)
Antibody Product Type	Primary antibodies
Concentration	1mg/ml
Isotype	IgG1
Immunogen	Human GAPDH fusion protein (Uniprot: P04406; NCBI: BC001601)

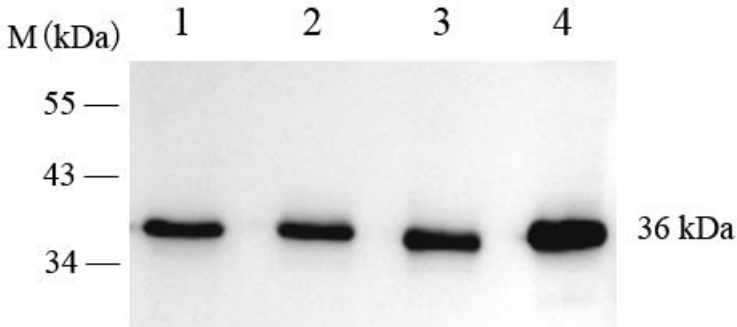
STORAGE

Storage	Store at -20°C, stable for one year after shipment
Storage Buffer	Aqueous solution (20mmol PBS, 0.01% Thimerosal, 50% glycerol, 0.2% BSA)

APPLICATIONS

Species Reactivity	Human, Mouse, Rat, Pig, Bovine, Goat, Rabbit, Chicken
Applications	WB, ELISA
	WB: 1:10000-1:40000

SAMPLE APPLICATION



Western blot

Lysates/proteins at 10 μ g per lane.

Lane 1: HEK-293T (human) whole cell lysate

Lane 2: C2C12 (mouse) whole cell lysate

Lane 3: C6 (rat) whole cell lysate

Lane 4: PK15 (pig) whole cell lysate

Primary antibody: Anti-GAPDH antibody (**FI01101**) at 1/10000 dilution

Secondary antibody: Goat Anti-Mouse IgG (H+L) at 1/8000 dilution

Predicted band size: 36 kDa